

HDMI SPLITTER EXTENDER

HDMI-C5SP-8SR

HDMI 1.3 SPLITTER / EXTENDER OVER SINGLE CAT5



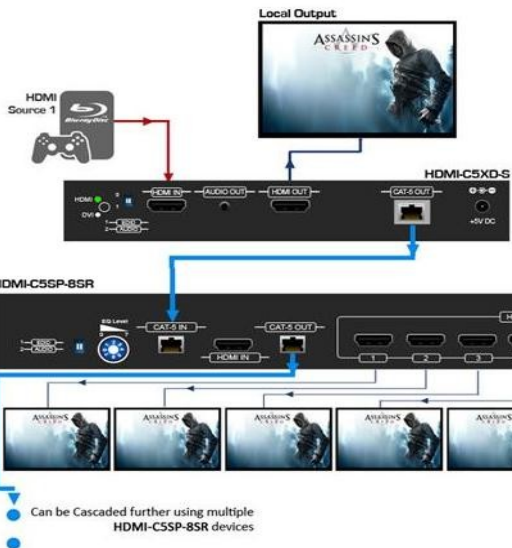
The Avenview HDMI-C5SP-8SR Cascading Distribution Amplifier provides solution by which high definition video and high quality audio can be transmitted to different locations over long distance.

FEATURES

- Silicon Image chipset embedded for best quality, compatibility and reliability
- HDMI 1.3c compliant
- HDCP compliant
- Regenerates the HDMI signal
- Acts as 2X1 HDMI Switch and 1X8 HDMI over CAT5 Splitter
- HDMI video distribution to up to 7 displays and one CAT5e Receiver or cascade to other HDMI-C5SP-8SR or HDMI-C5XD Series
- Supports default HDMI EDID and has the ability to learn the EDID of the displays
- Input up to 15m (50ft) using HDMI cables
- Extends up to 60m (200ft) (720p / 1080i) of output CAT5/6 cable
- Outputs up to 15m (50ft) using HDMI cables
- Pure unaltered uncompressed 7.1ch digital HDMI over LAN cable transmission
- Allows cascading
- 1U rack mountable with interlocking power adapter for fixedness

SPECIFICATIONS

Model	HDMI-C5SP-8SR
Description	2x8 HDMI 1.3 Transmitter / Splitter over CAT5 / CAT6 - Cascadable
HDMI Compliance	HDMI 1.3c
HDCP Compliance	Yes
Video Bandwidth	Single Link 225 Mhz (6.75Gbps)
Video Resolutions	480i / 480p / 720p / 1080i / 1080p60
HDMI Transmission Range	Full HD: (1080p) ~ 40meter (130feet) (CAT5e) / 50meter (165feet) (CAT6) HD: (720p/1080i) ~ 50meter (165feet) (CAT5e) / 60meter (200feet) (CAT6)
Audio Support	Surround Sound (up to 7.1 ch) or Stereo Digital Audio
Input TMDS Signal	1.2 Volts (peak-to-peak)
Input DDC Signal	5 Volts (peak-to-peak, TTL)
ESD Protection	[1] Human body model — ±15kV [air-gap discharge] & ±8kV [contact discharge] [2] Core chipset — ±8kV
Input Connectors	1 x HDMI 1 x RJ45
Output Connectors	1 x RJ45 7 x HDMI
Dimensions	13" x 4.3" x 1.7"
Power Supply	5V 4A DC
Power Consumption	13 Watt (max)



HDMI-C5SP-8SR

